



**PRODUCT CATALOGUE**

# TABLE OF CONTENTS

Page No	Contents
02	<b>ABOUT TAGLUS</b>
	<b>ALIGNER SHEETS</b>
04	TAGLUS PU FLEX
10	TAGLUS PREMIUM
16	TAGLUS STANDARD
	<b>RETAINER SHEETS</b>
22	TAGLUS TUFF
	<b>TAGLUS ARCH SHEETS</b>
28	TAGLUS ARCH
	<b>TAGLUS THERMOFORMING SOLUTIONS</b>
38	TAGLUS AUTOFORM
40	TAGLUS DUOFORM
	<b>TAGLUS 3D PRINTING RESINS</b>
42	MODEL RESIN
	<b>AUTOMATED THERMOFORMING SOLUTIONS</b>
45	AUTOMATED THERMOFORMING ROLLS
	<b>TAGLUS ORTHODONTIC ACCESSORIES</b>
49	ORTHODONTIC ACCESSORIES

# ABOUT TAGLUS



Taglus started with a mission to offer newer, innovative production solutions for dental laboratories and practices globally. Over the years, it has established itself as a distinguished brand for thermoplastic aligners and retainer sheets. Having earned the essential international quality assurance certifications, Taglus materials conform to the highest quality standards.

Taglus is committed to being the best solution while delivering leading-edge technology with a customer-first mindset every step of the way.

Through our continuous efforts to improve performance; we ensure the highest possible product quality and value to meet the patient's needs and expectations. Our niche products will enable dental professionals to transform smiles with higher predictability, improved outcomes, and enhanced patient satisfaction.

Our vision is to continue to be recognised as the best-in-class through innovation, unmatched quality, and the highest standards of service through our products. Based on our core values of integrity and commitment to excellence we continue to build relationships with our clients based on trust and satisfaction.



The Smartest Polyurethane Material



# WHAT IS TAGLUS PU FLEX ?

Taglus® PU Flex is a homogeneous polyurethane sheet that consists of linear polymeric chains made of alternating flexible and rigid segments. It is a high-performance aligner and retainer material that provides excellent flexibility, strength, and durability, while also providing comfort for the wearer.

## ABOUT TAGLUS PU FLEX

Taglus® PU flex comprises of flexible segments that have a low glass transition temperature while the rigid segments exhibit a high melting point. This eliminates the multilayer formation yet achieves all its properties in a single layer. The unique modification of these phases makes it possible to have properties such as cold-flexibility, soft-touch, wear and abrasion resistance, chemical resistance, scratch and tear resistance.

### DIMENSIONS

	THICKNESS (mm)
Ø 125mm	0.45
Ø 120mm	0.76
	1.02

\*\*Some variations are inherent to plastic testing, and preceeding data is considered to be approximate representative of mean values. Vedia Solutions makes no representation that the material in any representation, in any particular shipment, exactly confirms the values determined. Conversions from customary metric/US values may have been rounded and therefore may not be exact conversions. Neither Vedia Solutions nor its marketing affiliates will be responsible for the use of this information or any product method or device mentioned, and you must make your own determination of its suitability and completeness for your own use and purchasers of your products.

NO WARANTEE IS MADE OF THE MERCHANTABILITY OR SUITABILITY OF ANY PRODUCT AND NOTHING HEREIN STATES ANY OF THE SELLER'S TERMS OF SALE.



# PHYSICAL PROPERTIES

## TENSILE STRESS

In applications where plastic films are designed to withstand orthodontic forces in an aligner, the mechanical properties of polymers namely Strength, Stiffness & Toughness play a vital role. Such properties of Taglus® PU Flex sheets when investigated using standardized test methods, e.g. tensile stress as per ASTM D 638: 2014 by briefly applying load in one direction the approximate results and values observed during such test, demonstrate that Taglus® PU Flex has the highest tensile stress at the break in its class approximately equal to 61 MPa. So, it is an optimal balance of rigidity with elasticity. The test was performed by a NABL accredited Laboratory complying with ISO/IEC 17025 Laboratory Management System.

## IMPACT STRENGTH

Owing to the presence of alternating flexible and rigid segments, the polymer toughness is highly increased. When measured Un-notched Izod Impact Strength as per ASTM D256 @73°F (23°C) in 0.125" thickness, the value was approximately 85 J/m (No Break) indicating it is a virtually unbreakable aligner thermoforming foil.

## ELONGATION AT BREAK

Taglus® PU Flex sheets have a very high value of elongation at break. With an approximate value of 100%, the material can stretch up to 100 percent of its original dimensions before it breaks, this eliminates the worries of aligner cracking.

## WATER ABSORPTION

The water absorption data is important to understand the performance of the Taglus® PU Flex sheets during processing e.g. Thermoforming as well as in water or humid environments especially in saliva in the mouth, to avoid premature moisture-related failures. Taglus® PU Flex sheets when tested for 24 hours water absorption test exhibited only 0.15% weight changes against the industry-accepted chemical resistance standard of <3%.

## CLARITY:

The photographs of Taglus® PU Flex sheets when compared with other PU-based aligner sheets show a noticeable difference in the clarity of the object placed at a distance from the sheet. Taglus® PU Flex sheets have the highest clarity in their class of other PU-based aligner thermoforming foils.

## BIOCOMPATIBILITY TESTING

TAGLUS thermoforming files have passed biocompatibility testing namely skin sensitization , in vitro cytotoxicity and skin irritation test as a regulatory requirement for demonstrating the preclinical safety of medical devices, this is evaluated in accordance with the standard guideline, published by the US FDA “Use of International Standard ISO 10993-1, “Biological evaluation of medical devices - Part 1:Evaluation and testing within a risk management process” which can be accessed at <https://www.fda.gov/media/download>, issued on September 4th 2020 and originally published on June 16th 2016.



## WORKING INSTRUCTIONS: HEATING TIME

	<b>0.018"</b> <b>(0.45mm)</b>	<b>0.030"</b> <b>(0.762mm)</b>	<b>0.042"</b> <b>(1.020mm)</b>
BioSTAR MiniSTAR / MiniSTAR S	Code 102 / Code 112 / Code 122	Code 122 / Code 132 / Code 142	Code 142 / Code 152 / Code 162
Dreve Druformat Scan	Heating - 0:55 Cooling - 1:20	Heating - 1:10 Cooling - 1:20	Heating - 1:25 Cooling - 1:20

MiniSTAR/BioSTAR are trademarks of Scheu Dental Technology. Druformat Scan is trademark of Dreve Dentamid. Erkodent is trademark of ERKODENT Erich Kopp GmbH. TRACK®-V is trademark of FORESTADENT - Bernhard Foerster GmbH.

Pressure should be set ABOVE 4 Bars. Temperature is at MACHINE default.

Taglus Sheets are protected by masking sheets, remove the protective sheets AFTER thermoforming and finishing.

Above times are general guidelines only, as each individual machine acts slightly different.

If the plastic does not adapt well to the model, add or reduce 5 seconds to heating time until the result is ideal.

If plastic forms folds, results in NOT clear tray OR shows bubble formation, recalibrate your heating element or reduce heating time until the result is ideal.

For any clinical and Lab related questions, please do not hesitate to contact us at [info@taglus.com](mailto:info@taglus.com) and in case of any serious incident that has occurred in relation to this medical device contact us at [info@taglus.com](mailto:info@taglus.com) and the competent authority of the Member State in which the user and/or patient is established.



The Finest Aligner Material



 **TAGLUS<sup>®</sup> PREMIUM**  
The Finest Aligner Material

# WHAT IS TAGLUS ?

>TOUGH

>TRANSPARENT

>FLEXIBLE

Our addition of special grade glycol to PET removes the hazing effect seen during heating and also prevents an undesirable crystallization. Additionally, the inclusion of glycol in this composition transforms the inner walls of aligner/retainer into a more comfortable material to the patient. So the Taglus premium is an unique engineering combination of elasticity with rigidity and clarity a perfect balance.

## ABOUT TAGLUS PREMIUM™

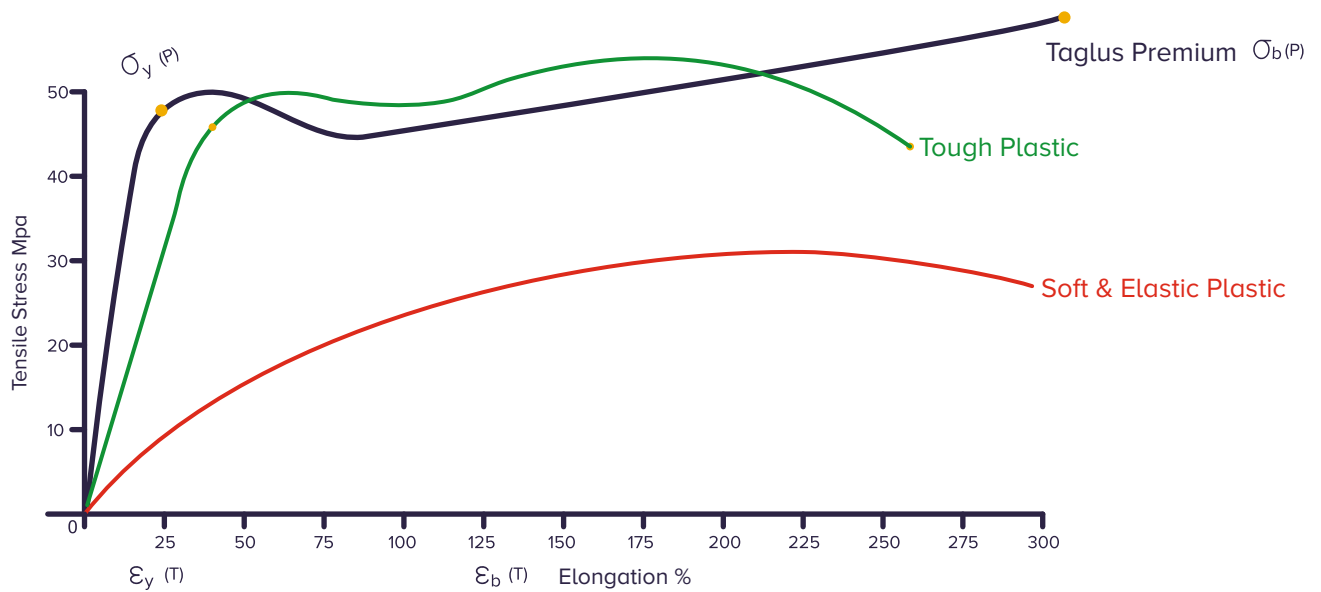
Taglus Premium is an innovative aligner and retainer material with superior material properties and enhanced esthetics. As a unique engineering combination of elasticity with matchless rigidity and crack resistance, it offers the most optical clarity along with stain resistance for enhanced esthetics.

### SIZES

DIMENSIONS	THICKNESS (mm)
	0.5
⌀ 125mm	0.762
⌀ 120mm	1.02
	1.5
■ 125mm x 125mm	2.0

Available in Round, Square, Arch & Roll Form

## TAGLUS RETAINER & ALIGNER PROPERTIES



### TENSILE STRESS

In applications where plastic films are designed to withstand orthodontic forces in an aligner, the mechanical properties of polymers namely Strength, stiffness and toughness play a vital role. Such properties of Taglus premium sheets when investigated using standardised test methods, e.g. tensile stress as per ASTM D638: 2014 by briefly applying load in one direction the approximate results and values observed during such test, demonstrate that Taglus Premium is a unique balance of rigidity with elasticity. The test was performed by an NABL accredited Laboratory complying with ISO/IEC 17025 Laboratory Management System.

### TENSILE MODULUS OF ELASTICITY

Tensile Modulus, or Youngs Modulus, widely known as the tendency of an object to deform along an axis when opposing forces are applied along that axis; and defined as the ratio of tensile stress to tensile strain. TAGLUS Premium sheets having a very high tensile modulus of approximately upto 1800-2200 MPa, tested as per ASTM D638:2014 give the best crack-free aligners and retainers.

**The raw material used to manufacture TAGLUS is compiled in accordance with various agencies worldwide as follows:**

## **BIOCOMPATIBILITY TESTING**

Taglus thermoforming foils have passed biocompatibility testing namely Skin Sensitization, in vitro Cytotoxicity and Skin Irritation test as a regulatory requirement for demonstrating the preclinical safety of medical devices, this is evaluated in accordance with the standard guideline, published by the US FDA “Use of International Standard ISO 10993-1” Biological evaluation of medical devices —Part 1: Evaluation and testing within a risk management process “ which can be accessed at <https://www.fda.gov/media/85865/download>, issued on September 4th 2020 and originally published on June 16th, 2016.

Scan to view test report





## WORKING INSTRUCTIONS: HEATING TIME

	0.020" (0.5mm)	0.030" (0.762mm)	0.040" (1.020mm)	0.060" (1.5mm)	0.080" (2.0mm)
BioSTAR MiniSTAR / MiniSTAR S	Code 103/ Code 113	Code 103/ Code 113/ Code 123	Code 113/ Code 123/ Code 133	Code 133/ Code 143 / Code 153	Code 184/ Code 194/ Code 204
Dreve Druformat Scan	Heating - 0:55 Cooling - 1:20	Heating - 1:05 Cooling - 1:30	Heating - 1:10 Cooling - 1:40	Heating - 1:30 Cooling - 2:00	Heating - 2:00 Cooling - 2:20

MiniSTAR/BioSTAR are trademarks of Scheu Dental Technology. Druformat Scan is trademark of Dreve Dentamid. Erkodent is trademark of ERKODENT Erich Kopp GmbH. TRACK®-V is trademark of FORESTADENT - Bernhard Foerster GmbH.

Pressure should be set ABOVE 4 Bars. Temperature is at MACHINE default.

Taglus Sheets are protected by masking sheets, remove the protective sheets AFTER thermoforming and finishing.

Above times are general guidelines only, as each individual machine acts slightly different.

If the plastic does not adapt well to the model, add or reduce 5 seconds to heating time until the result is ideal.

If plastic forms folds, results in NOT clear tray OR shows bubble formation, recalibrate your heating element or reduce heating time until the result is ideal. For any clinical and Lab related questions, please do not hesitate to contact us at [info@taglus.com](mailto:info@taglus.com) and in case of any serious incident that has occurred in relation to this medical device contact us at [info@taglus.com](mailto:info@taglus.com) and the competent authority of the Member State in which the user and/or patient is established.





## ABOUT TAGLUS STANDARD™

Taglus standard is a high-performance copolyester product with excellent transparency, chemical resistance, and superior processability. The material is a unique engineering combination of elasticity and rigidity in a perfect balance. This is accompanied by superior aesthetics, high optical clarity, and stain resistance.

### SIZES

DIMENSIONS	THICKNESS (mm)
○ 125mm	0.762
○ 120mm	1.02
■ 125mm x 125mm	

Available in Round, Square, Arch & Roll Form

\*\*Some variations are inherent to plastic testing, and preceeding data is considered to be approximate representative of mean values. Vedia Solutions makes no representation that the material in any representation, in any particular shipment, exactly confirms the values determined. Conversions from customary metric/US values may have been rounded and therefore may not be exact conversions. Neither Vedia Solutions nor its marketing affiliates will be responsible for the use of this information or any product method or device mentioned, and you must make your own determination of its suitability and completeness for your own use and purchasers of your products.

NO WARANTEE IS MADE OF THE MERCHANTABILITY OR SUITABILITY OF ANY PRODUCT AND NOTHING HEREIN STATES ANY OF THE SELLER'S TERMS OF SALE.

Engineered for clear aligners and retainers with superior mechanical properties:

High Flexural modulus of 2098 MPa to give crack free durable aligners and retainers.

Highest Impact strength of 105 J/m Vs all traditional materials available for aligners and retainers, makes it more resistant to deformation and cracks over time.

Light transmission percentage at 90% (according to ASTM D-103) making it optically clear.

Moisture Resistant Dual Protective Masking makes it scratch, dust resistant and ensures the quality of the aligner/retainer is preserved throughout the thermoforming process as well.

## INDICATIONS:

### CLEAR ALIGNERS

Taglus Standard serve as a fine esthetic and predictable solution of dental alignment problems. Based on the recommendations of certified orthodontist, the aligners generate gentle and consistent forces approximately up to 0.25 mm per aligner in 7 to 15 days.

### ORTHODONTIC RETAINER

Can be used to design transparent orthodontic retainers post treatment due its excellent crack resistant properties thereby improving patient compliance.

### SURGICAL SPLINT

Taglus Standard can be used to fabricate surgical splints owing to its greater stability, consistently high quality due to zero curing shrinkage. Adequate binding to all types of light and heat-cured acrylics and precise adaptation to the model under pressure adds to its popularity as a splint material.

## WORKING INSTRUCTIONS: HEATING TIME

	0.030" (0.762mm)	0.040"/ (1.020mm)
BioSTAR MiniSTAR / MiniSTAR S	Code 103/ Code 113/ Code 123	Code 113/ Code 123/ Code 133
Dreve Drufomat Scan	Heating - 1:05 Cooling - 1:30	Heating - 1:10 Cooling - 1:40

MiniSTAR/BioSTAR are trademarks of Scheu Dental Technology. Drufomat Scan is trademark of Dreve Dentamid. Erkodent is trademark of ERKODENT Erich Kopp GmbH. TRACK®-V is trademark of FORESTADENT - Bernhard Foerster GmbH.

Pressure should be set ABOVE 4 Bars. Temperature is at MACHINE default.

Taglus Sheets are protected by masking sheets, remove the protective sheets AFTER thermoforming and finishing.

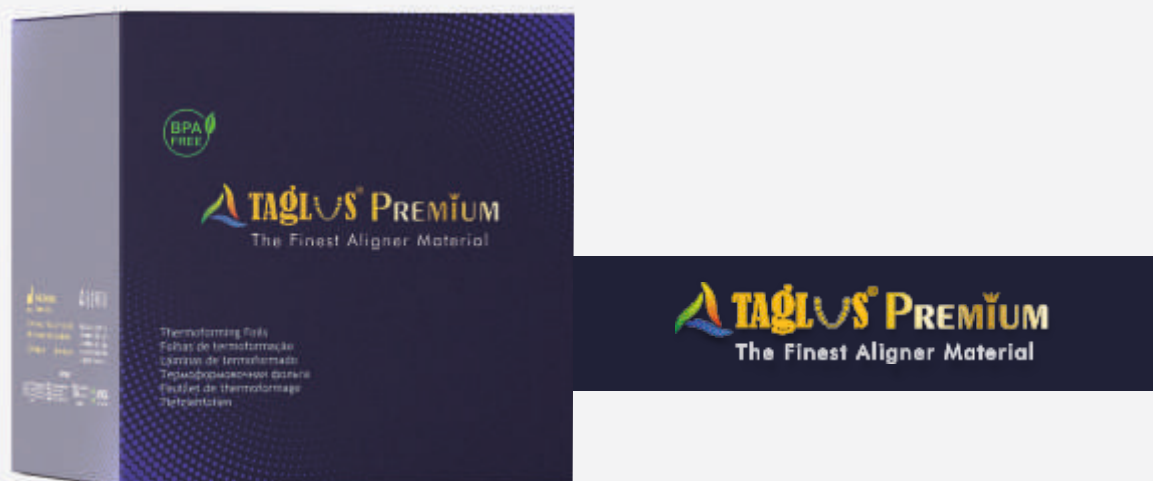
Above times are general guidelines only, as each individual machine acts slightly different.

If the plastic does not adapt well to the model, add or reduce 5 seconds to heating time until the result is ideal.

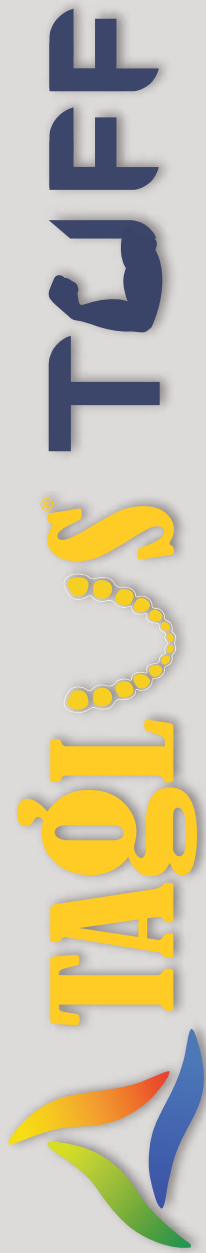
If plastic forms folds, results in NOT clear tray OR shows bubble formation, recalibrate your heating element or reduce heating time until the result is ideal.

For any clinical and Lab related questions, please do not hesitate to contact us at [info@taglus.com](mailto:info@taglus.com) and in case of any serious incident that has occurred in relation to this medical device contact us at [info@taglus.com](mailto:info@taglus.com) and the competent authority of the Member State in which the user and/or patient is established.

# THERMOFORMING ALIGNER SHEETS



Available in: Arch | Round 120mm | Round 125mm | Square | Roll form



The Ultimate Retainer Material (\*Patent Pending\*)



**TAGLUS TUFF**

The Ultimate Retainer Material (\*Patent Pending)



Thermoforming foils



✉ info@taglus.com  
🌐 www.taglus.com

MADE IN  
**INDONESIA**

YON. Abadi Perkasa, J. P. (Unit of Liquid Dental Resin, P. 1.193)  
KIDULAN, C. 6 (Unit of Liquid Dental Resin, P. 1.193)  
KIDULAN, C. 6 (Unit of Liquid Dental Resin, P. 1.193)

REGISTERED BY

RES

MADE IN

INDONESIA

TGA

ANVISA

# WHAT IS TAGLUS ?

>TOUGH

>TRANSPARENT

>FLEXIBLE

Our addition of special grade glycol to PET removes the hazing effect seen during heating and also prevents an undesirable crystallization. Additionally, the inclusion of glycol in this composition transforms the inner walls of aligner/retainer into a more comfortable material to the patient. So the Taglus Tuff is unique engineering combination of elasticity with rigidity and clarity - a perfect balance.

## ABOUT TAGLUS TUFF™

Uniaxially oriented amorphous material with polymer chain locked together in a non-specific lattice structure.

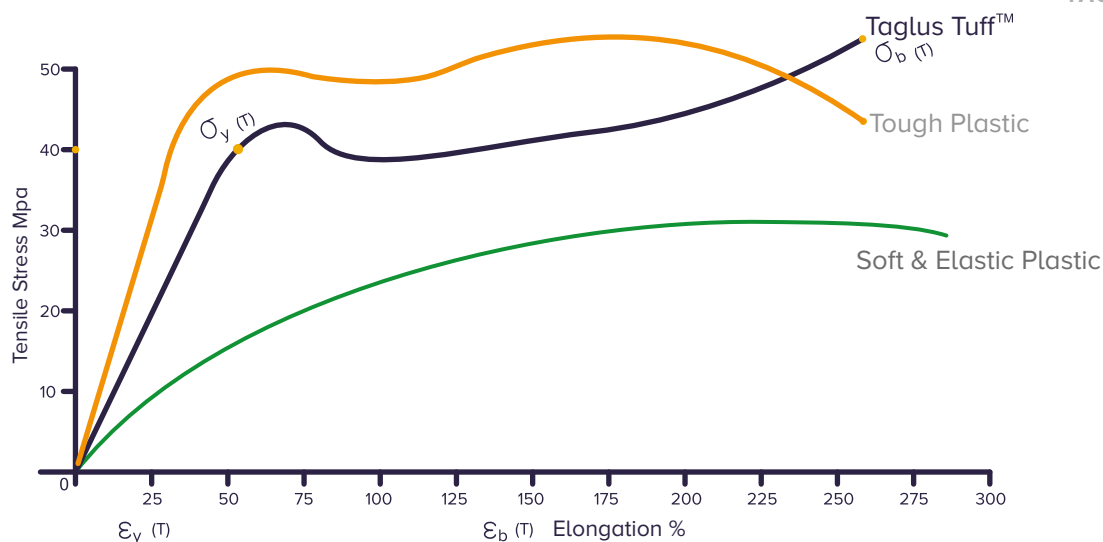
### SIZES

DIMENSIONS	THICKNESS (mm)
⊘ 125mm	0.80
⊘ 120mm	
■ 125mm x 125mm	

Available in Round, Square, Arch & Roll Form

\*\*Some variations are inherent to plastic testing, and preceeding data is considered to be approximate representative of mean values. Vedia Solutions makes no representation that the material in any representation, in any particular shipment, exactly confirms the values determined. Conversions from customary metric/US values may have been rounded and therefore may not be exact conversions. Neither Vedia Solutions nor its marketing affiliates will be responsible for the use of this information or any product method or device mentioned, and you must make your own determination of its suitability and completeness for your own use and purchasers of your products.

NO WARANTEE IS MADE OF THE MERCHANTABILITY OR SUITABILITY OF ANY PRODUCT AND NOTHING HEREIN STATES ANY OF THE SELLER'S TERMS OF SALE.



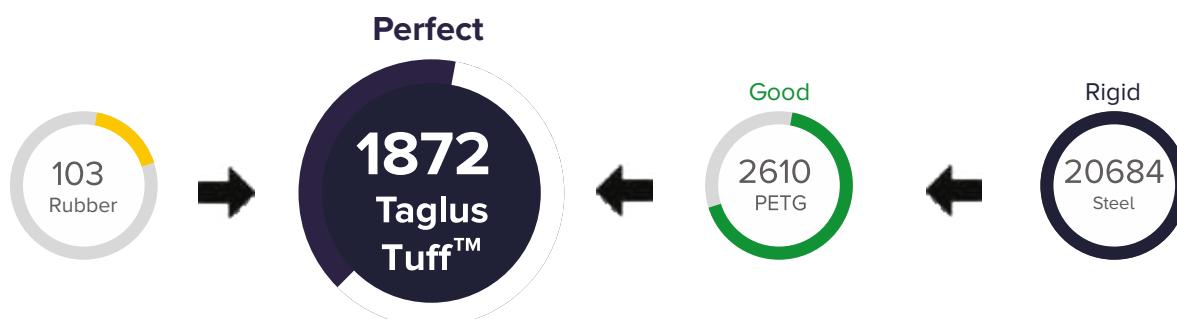
## TOUGHNESS

The unique balance of mechanical properties makes TAGLUS Tuff Sheets superior in strength as well as toughness, making it an ideal material for long-term retainers. The retainers fabricated out of this material remain crack-free even after prolonged use in ideal cases.

The properties of Taglus Tuff sheets when investigated using standardized test methods, eg. Tensile stress as per ASTM D 638:2014 by briefly applying load in one direction the approximate results and values observed during such test, demonstrate that Taglus Tuff sheets are a unique balance of strength and toughness. The test was performed by an NABL accredited Laboratory complying with ISO/IEC 17025 Laboratory Management System.

## TENSILE MODULUS

Tensile Modulus, or Youngs Modulus, widely known as the tendency of an object to deform along an axis when opposing forces are applied along that axis; it is defined as the ratio of tensile stress to tensile strain. Taglus Tuff having a very high tensile modulus of approximately upto 1872MPa, tested as per ASTM D638:2014 makes it the best comfortable aligners and retainers.



## CLARITY

The photographs of Taglus Tuff when compared with other PU Based aligner sheets shows a noticeable difference in the clarity of the object placed at a distance from the sheet. Taglus Tuff has the highest clarity in its class.

**The raw material used to manufacture TAGLUS is compiled in accordance with various agencies worldwide as follows:**

## **BIOCOMPATIBILITY TESTING**

Taglus Tuff sheets have passed biocompatibility testing namely Skin Sensitization, in Vitro Cytotoxicity and Skin Irritation test as a regulatory requirement for demonstrating the preclinical safety of medical devices, this is evaluated in accordance with the standard guideline, published by the US FDA “Use of International Standard ISO10993-1” Biological evaluation of medical devices — Part 1: Evaluation and testing within a risk management process “ which can be accessed at <https://www.fda.gov/media/85865/download>, issued on September 4th, 2020 and originally published on June 16th, 2016.

## **WORKING INSTRUCTIONS: HEATING TIME**

<b>0.030 ”</b> <b>0.8mm</b>	
BioSTAR MiniSTAR / MiniSTAR S	Code 103 / Code 113 / Code 123
Dreve Druformat Scan	Heating - 1:05 Cooling - 1:30

MiniSTAR/BioSTAR are trademarks of Scheu Dental Technology. Druformat Scan is trademark of Dreve Dentamid. Erkodent is trademark of ERKODENT Erich Kopp GmbH. TRACK®-V is trademark of FORESTADENT - Bernhard Foerster GmbH.

Pressure should be set ABOVE 4 Bars. Temperature is at MACHINE default.

Taglus Sheets are protected by masking sheets, remove the protective sheets AFTER thermoforming and finishing.

Above times are general guidelines only, as each individual machine acts slightly different.

If the plastic does not adapt well to the model, add or reduce 5 seconds to heating time until the result is ideal.

If plastic forms folds, results in NOT clear tray OR shows bubble formation, recalibrate your heating element or reduce heating time until the result is ideal. For any clinical and Lab related questions, please do not hesitate to contact us at [info@taglus.com](mailto:info@taglus.com) and in case of any serious incident that has occurred in relation to this medical device contact us at [info@taglus.com](mailto:info@taglus.com) and the competent authority of the Member State in which the user and/or patient is established.

# THERMOFORMING RETAINER SHEETS



**TAGLUS TUFF**  
The Ultimate Retainer Material ("Patent Pending")

# TAGLUS ARCH

Patent - Pending\*



Over the years Taglus has grown to become one of the world's leading providers of newer, technologically advanced dental products. Uncompromised quality and customer focus have been important goals throughout this journey. As we continue to grow, we have decided to step up and expand our goals. Taglus now commits to greener smiles.

## INTRODUCING TAGLUS ARCH

**Patent-pending, unique dental arch-shaped thermoforming sheets. Clear, biocompatible, and durable, the Taglus Arch variant is available with both Taglus Premium and Taglus Tuff.**





# MAKE A DIFFERENCE WITH TAGLUS ARCH



## LESS WASTAGE

During fabrication, a considerable amount of sheet around the thermoformed appliance is discarded and generates waste. With continuous research and development, we innovated an exclusive design that reduces the thermoplastic material consumption per appliance without affecting its clinical performance. The distinct design of Taglus Arch sheets represents our commitment to creating positive environmental changes.

## COST-EFFECTIVE

Even though the production process is more complex we have managed to reduce the price while keeping the same quality that we pride on for our Taglus customers.

## EASY FINISHING

Another highlight of Taglus Arch sheets is the presence of 5 distinct slits at the periphery. They facilitate trimming off excess material post-fabrication and allow for convenient removal of the appliance from the model.

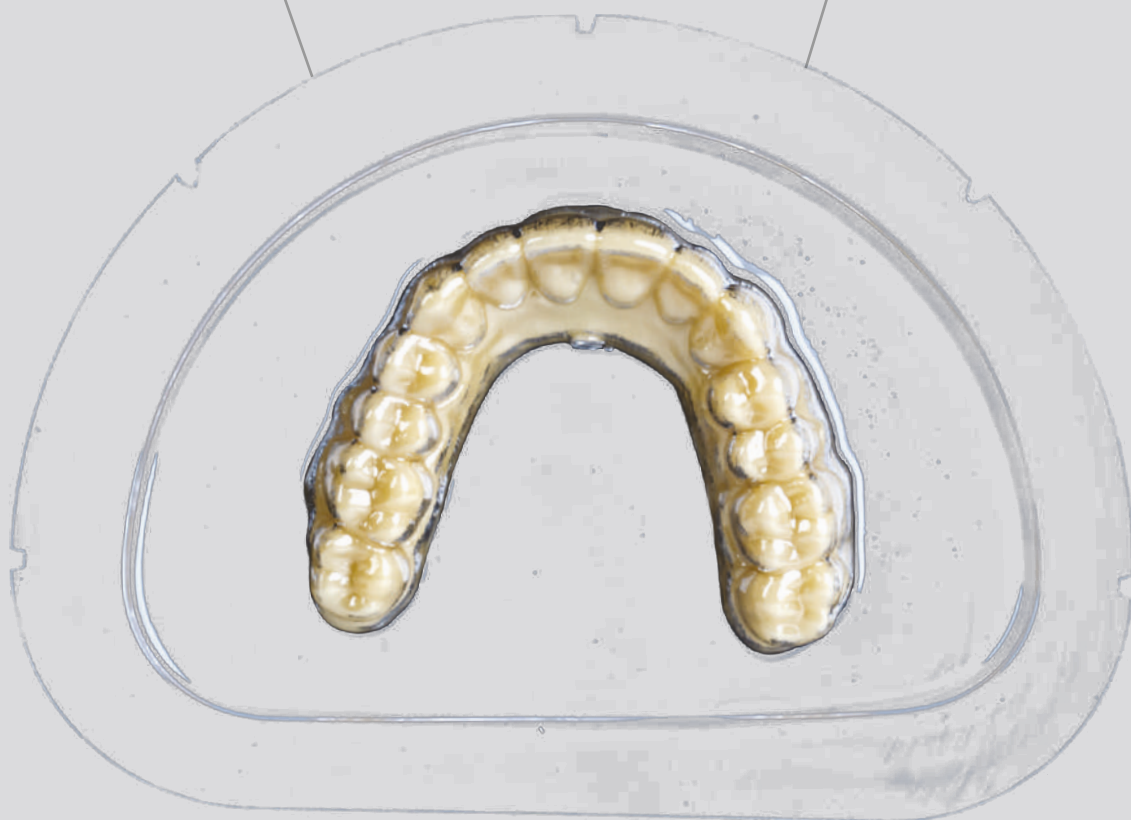


# WHY UPGRADE TO TAGLUS ARCH?

GREATER VALUE  
WITH REVISED PRICING

PROMOTE  
SUSTAINABLE DENTISTRY

MORE CONVENIENT  
WORKFLOW





# AVAILABLE THICKNESS



Taglus Premium	0.020"	0.030"	0.042"
	(0.5mm)	(0.762mm)	(1.020mm)

Taglus Tuff	0.030" (0.8mm)
-------------	-------------------



Taglus Standard	0.030"	0.042"
	(0.762mm)	(1.020mm)



# WORKING CODES:

## Time to Heat

Taglus Premium and Standard					
	0.020" (0.5mm)	0.030" (0.762mm)	0.042" (1.020mm)	0.060" (1.5mm)	0.080" (2.0mm)
BioSTAR MiniSTAR/ MiniSTAR S	Code 103/ Code 113	Code 103/ Code 113/ Code 123	Code 113/ Code 123/ Code 133	Code 133 / Code 143 / Code 153	Code 184 / Code 194 / Code 204
Dreve Druformat Scan	Heating - 0:55 Cooling - 1:20	Heating - 1:05 Cooling - 1:30	Heating - 1:10 Cooling - 1:40	Heating - 1:30 Cooling - 2:00	Heating - 2:00 Cooling - 2:20

Taglus Tuff Retainer	
	0.030" (0.8mm)
BioSTAR MiniSTAR/ MiniSTAR S	Code 103 / Code 113 / Code 123
Dreve Druformat Scan	Heating - 1:05 Cooling - 1:30

MiniSTAR/BioSTAR are trademarks of Scheu Dental Technology. Druformat Scan is trademark of Dreve Dentamid. Erkodent is trademark of ERKODENT Erich Kopp GmbH. TRACK®-V is trademark of FORESTADENT - Bernhard Foerster GmbH.

Pressure should be set ABOVE 4 Bars. Temperature is at MACHINE default.

Taglus Sheets are protected by masking sheets, remove the protective sheets AFTER thermoforming and finishing.

Above times are general guidelines only, as each individual machine acts slightly different.

If the plastic does not adapt well to the model, add or reduce 5 seconds to heating time until the result is ideal.

If plastic forms folds, results in NOT clear tray OR shows bubble formation, recalibrate your heating element or reduce heating time until the result is ideal. For any clinical and Lab related questions, please do not hesitate to contact us at [info@taglus.com](mailto:info@taglus.com) and in case of any serious incident that has occurred in relation to this medical device contact us at [info@taglus.com](mailto:info@taglus.com) and the competent authority of the Member State in which the user and/or patient is established.



# HOW TO USE TAGLUS ARCH?

Taglus Arch aims to lower manufacturing costs by eliminating the investment in expensive and space-consuming equipment. We have innovated an exclusive Taglus Arch Adaptor Kit that can easily be used with thermoforming units such as Biostar, Ministar, Erkodent, Dreve Druformat. It has components that serve as extensions and can be placed over your existing thermoforming unit.



## TAGLUS ARCH ADAPTOR KIT



# THERMOFORMING SOLUTIONS



**TAGLUS  
AUTOFORM**



**TAGLUS  
DUOFORM**

**NEW LAUNCH**

# TAGLUS AUTOFORM

ALL IN ONE THERMOFORMING MACHINE FOR Ø125MM SHEETS



Capacity:

**120 - 140** \*

Per Hour



✦ Compatible with material thickness from **0.5 mm to 5 mm**

- ☑ Retainers
- ☑ Aligners
- ☑ Mouth guards
- ☑ Night guards
- ☑ Bleaching trays & more





### Technical specifications

Production capacity (per hr) :	120 - 140* nos.
Forming film diameter (MAX)	125mm
Forming film thickness (MAX)	5mm
Forming height above film line (MAX)	30mm
Forming pressure (MAX)	4-5 bar
Heating power	750w
Forming tables driven by	electric drive
Total installed power	2.5kw
Power supply	110v +G 50Hz
Dimensions (mm)	1296 H X 1145 L X 690 W
Weight	380kgs

# TAGLUS DUOFORM

Innovative pressure moulding technique for practice and laboratory – quick, compact and precise.



**Voltage** - 110V/ 220V (AC) - 50/60 hz

**power** - 750W

**Pressure** - 60PSi / 4 BAR

**W\*D\*H** - 395mm\*390mm\*225mm

**Weight** - 15 kgs.

## Features :

- Working Temperature Reached within 1 Second 4 bar forming pressure.
- Clearly Structured Display
- Instant heating with shortwave infrared heaters.
- Special arch design machine for Taglus arch sheets.
- Acoustically and Optically Assisted Operator Guidance Easy to use interface
- 4.3 inch touchscreen display
- Also Compatible with  $\varnothing$ 125mm sheets



# 3D PRINTING RESINS



## ABOUT US

Taglus was founded in the year 2018. Taglus Resins are a range of quality liquid resins offering best results for 3D printing. The aim was to introduce superlative quality resins perfect for 3D printing. In-office dental 3D printing helps improve the efficiency of forward-thinking practices all over the world. By leveraging existing technologies that exist in digital dentistry, 3D printing enables better responsiveness to patient needs, significantly reduces manufacturing times, and opens up new treatment options. Taglus Resins are evaluated in accordance with Medical devices -

Part 1: Evaluation and testing within a risk management process, and ISO7405:2009 / (R)2015, Dentistry-Evaluation of bio-compatibility of medical devices used in dentistry, and passed the requirements for the following biocompatibility risks: Cytotoxicity, Skin Irritation and Skin Sensitization. The product was developed and complies with the following ISO Standards: Medical Devices – Quality Management Systems – Requirements for Regulatory Purposes EN ISO13485:2016 from a certified lab that complies with the Quality Management System as per ISO/IEC 17025:2005.

## WHY CHOOSE TAGLUS RESIN

Taglus Resins are engineered with properties to demonstrate excellent results with respect to 3D printing. Our Dental solutions are designed for use in dental laboratories, making production methods faster, easier and more effective.

## MACHINE COMPATIBILITY

All 3D printers that use DLP & LCD as their printing techniques.

# MODEL RESIN

TAGLUS model resin is a material based on meth(acrylate) resin for DLP with 385 nm / 405 nm LED & LCD systems for the production of dental models.

It is a high-precision & high-accuracy resin with a smooth matte surface finish, perfect for dental model making. The resin has High form and break stability & is abrasion, moisture and light resistant.

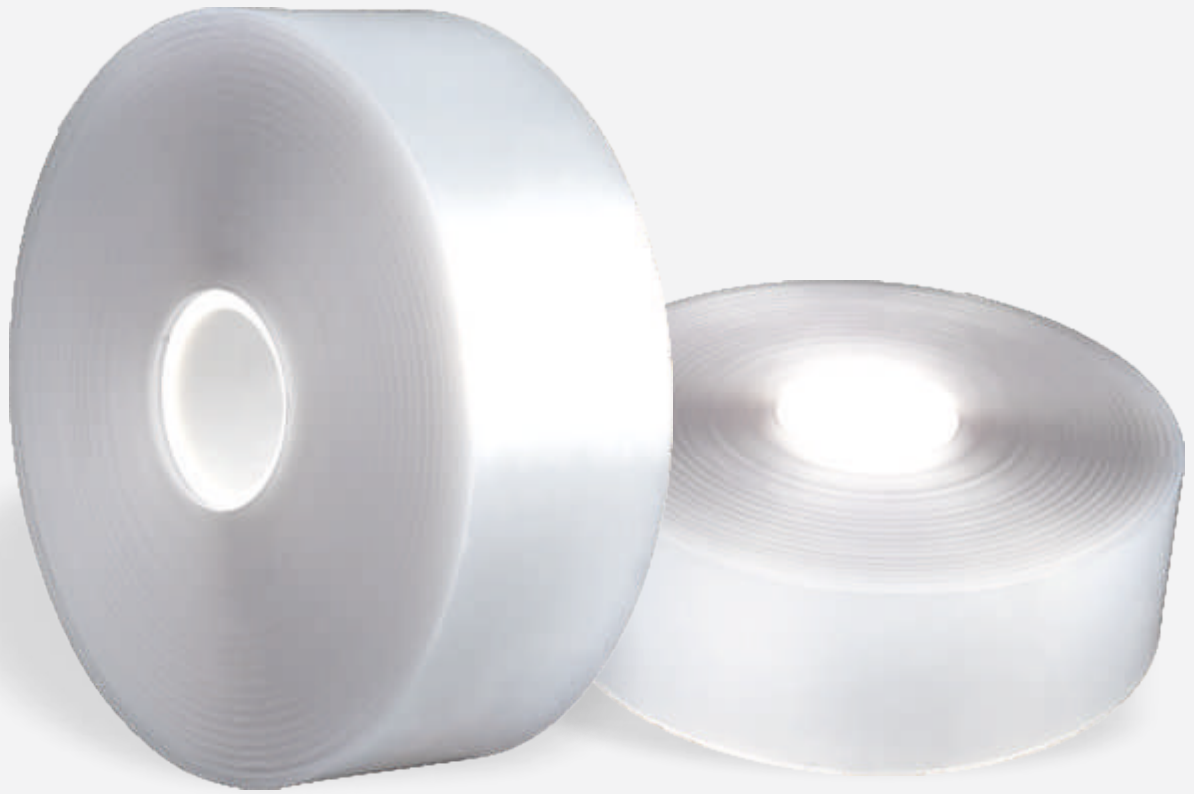


## USES

- ☐ Crown & Bridge Models
- ☐ Clear Aligner Models
- ☐ Orthodontic Models
- ☐ Diagnostic Models
- ☐ Implant Models
- ☐ Stubs

PROPERTY	VALUE	METHOD
Hardness R scale	105	ASTM D 785:2008
Flexural Modulus of Elasticity kgf/cm <sup>2</sup>	10433	ASTM D 790-2017
Elongation @ Break %	1.71	ASTM D 638-2014
Tensile Strength kgf/cm <sup>2</sup>	205	ASTM D 638-2014
Izod Impact Strength, Notched	23	ASTM D 256 Method A:2010e1
Viscosity MPa	300	ASTM D216-2
Colour	Beige	TM18

# AUTOMATED THERMOFORMING



**ALIGNER AND RETAINER SHEETS  
NOW AVAILABLE IN ROLL FORM**

**VALIDATED BY**

**HAMER**



# AUTOMATED THERMOFORMING ROLLS

Taglus aligners and retainer rolls are the best options if you are using automated thermoforming machines. Validated by HAMER and ALVY Systems, they are available in a wide range of thicknesses, dimensions, and materials according to the need of the aligner company. Taglus rolls aim to increase production capacity while reducing material cost up to 73%.

ROLL WIDTH (mm)	ROLL THICKNESS WITHOUT MASKING (mm)	MASKING THICKNESS (mm)	TOTAL THICKNESS (mm)	ROLL DIAMETER (mm)	ROLL IN METER	ROLL WEIGHT (KG)
-----------------------	---	------------------------------	----------------------------	--------------------------	---------------------	------------------------

## TAGLUS PU FLEX ROLL 0.762 MM

101.06	0.762	0.1	0.862	420	153.26	16.02
137.00						21.71
254.00						40.26

## TAGLUS PU FLEX ROLL 1.02 MM

101.06	1.02	0.1	1.12	420	117.96	16.02
137.00						21.71
254.00						40.26

## TAGLUS PREMIUM ROLL 0.762 MM

101.06	0.762	0.1	0.862	420	153.26	16.95
137.00						22.98
254.00						42.61

## TAGLUS PREMIUM ROLL 1.02 MM

101.06	1.02	0.1	1.12	420	117.96	16.95
137.00						22.98
254.00						42.61

# AUTOMATED THERMOFORMING ROLLS

ROLL WIDTH (mm)	ROLL THICKNESS WITHOUT MASKING (mm)	MASKING THICKNESS (mm)	TOTAL THICKNESS (mm)	ROLL DIAMETER (mm)	ROLL IN METER	ROLL WEIGHT (KG)
-----------------------	---	------------------------------	----------------------------	--------------------------	---------------------	------------------------

TAGLUS STANDARD ROLL 0.762 MM

101.06	0.762	0.1	0.862	420	153.26	16.95
137.00						22.98
254.00						42.61

TAGLUS STANDARD ROLL 1.02 MM

101.06	1.02	0.1	1.12	420	117.96	16.95
137.00						22.98
254.00						42.61

TAGLUS TUFF ROLL 0.80 MM

101.06	0.8	0.1	0.9	420	146.79	15.88
137.00						21.53
254.00						39.93

## WE STRONGLY RECOMMEND

AUTOMATED  
THERMOFORMING MACHINE

# AY101

FOR OPTIMAL RESULTS  
WITH TAGLUS ROLLS

TO KNOW MORE CONTACT: +91 9930905047





# ORTHODONTIC ACCESSORIES



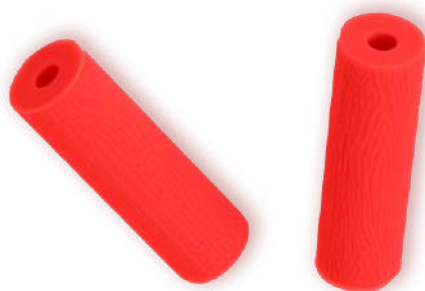
# TAGLUS ORTHODONTIC ACCESSORIES

## TAGLUS RETAINER BOXES

Taglus Retainer Boxes are created using a unique in-house injection moulding process and are made of high-quality material.

### WHY ARE OUR RETAINER AND ALIGNER BOXES DISTINCT?

- Customizable with your brand's logo & colours
- Sturdy and lightweight
- Magnetic closure
- Competitive prices



## TAGLUS ALIGNERS CHEWIES

Taglus Aligner Chewies are made of high-quality Silicon material, allowing comfortable seating of aligner trays. They are available in attractive colours.

### THEY'RE IDEAL FOR:

- Proper aligner placement
- Ensuring Oral Hygiene

## TAGLUS ALIGNER REMOVAL TOOLS

Made with safe plastic material, it helps to remove the invisible aligners and retainers safely and quickly without damaging them and the attachments. The compact design fits into the aligner/retainer box easily.

### TAGLUS ALIGNER REMOVAL TOOLS PROVIDE:

- Comfortable grip
- Two-sided hook
- Prevents gum injuries



Item	Packaging Size
Taglus Retainer Box	100pcs / Box
Taglus Aligner Chewies (Pair of 2)	
Taglus Aligner Removal Tool	



**SCAN TO VIEW THE PRICELIST**



**CERTIFIED BY**

Wellkang Ltd, Enterprise Hub,  
NW Business Complex,  
1 Beraghmore Rd, Derry,  
BT48 8SE, Northern Ireland



Wellkang Ltd  
(www.UKCA-marking.com)  
16 Castle St., Dover,  
CT16 1PW, England



**ANVISA**  
Brazil & South America



✉ info@taglus.com 🌐 www.taglus.com

**follow us at**



@taglus



taglus\_official



taglus



@taglus

TAGLUS, TAGLUS logo, Taglus products are trademarks of Vedia Solutions and its affiliates in India. The Taglus logo is a brand of Vedia Solutions and its affiliates in India